

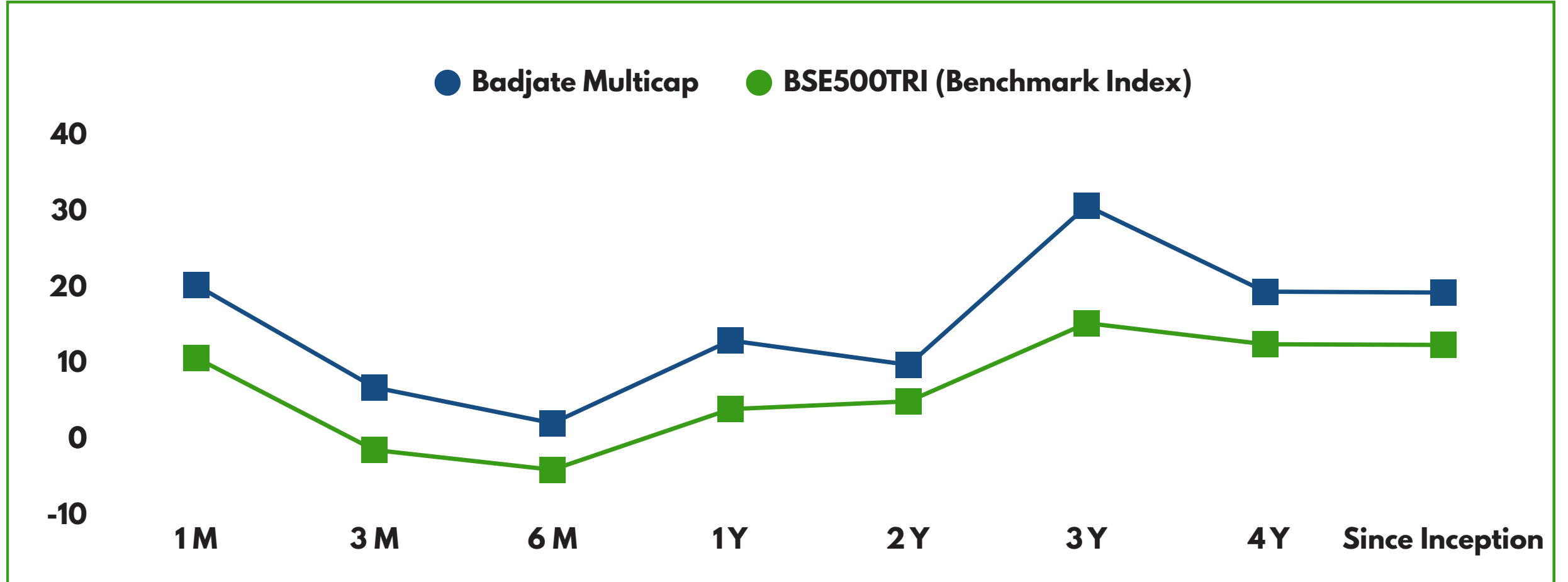
### APRIL 2026

#### INVESTMENT THEME & STRATEGY

THE FUND'S STRATEGY FOCUSES ON GENERATING ALPHA BY IDENTIFYING UNDERVALUED, HIGH-BETA STOCKS WITH THE POTENTIAL TO DELIVER STRONG RETURNS OVER THE SHORT TO MEDIUM TERM. WITH A SIGNIFICANT ALLOCATION TO SMALL AND MID-CAP COMPANIES, THIS PORTFOLIO IS BEST SUITED FOR INVESTORS WITH A MODERATE TO HIGH-RISK APPETITE.

#### PERFORMANCE (%) AS ON APRIL 30<sup>TH</sup>, 2026

PERIOD	1 MONTH	3 MONTH	6 MONTH	1 YEAR	2 YEAR	3 YEAR	4 YEAR	SINCE INCEPTION
BADJATE MULTICAP	19.92	6.50	1.79	12.65	9.45	30.34	19.07	18.95
BSE 500 TRI(%)	10.38	-1.73	-4.33	3.64	4.66	14.93	12.16	12.07



#### PMS DETAILS

**STRATEGY NAME** : BADJATE MULTICAP FUND

**FUND MANAGER** : MR. ANUJ BADJATE

**ASSOCIATE FUND MANAGER** : MR. MANGESH NARNAWARE

**FUND TYPE** : MULTICAP EQUITY

**FUND STRUCTURE** : DISCRETIONARY PMS

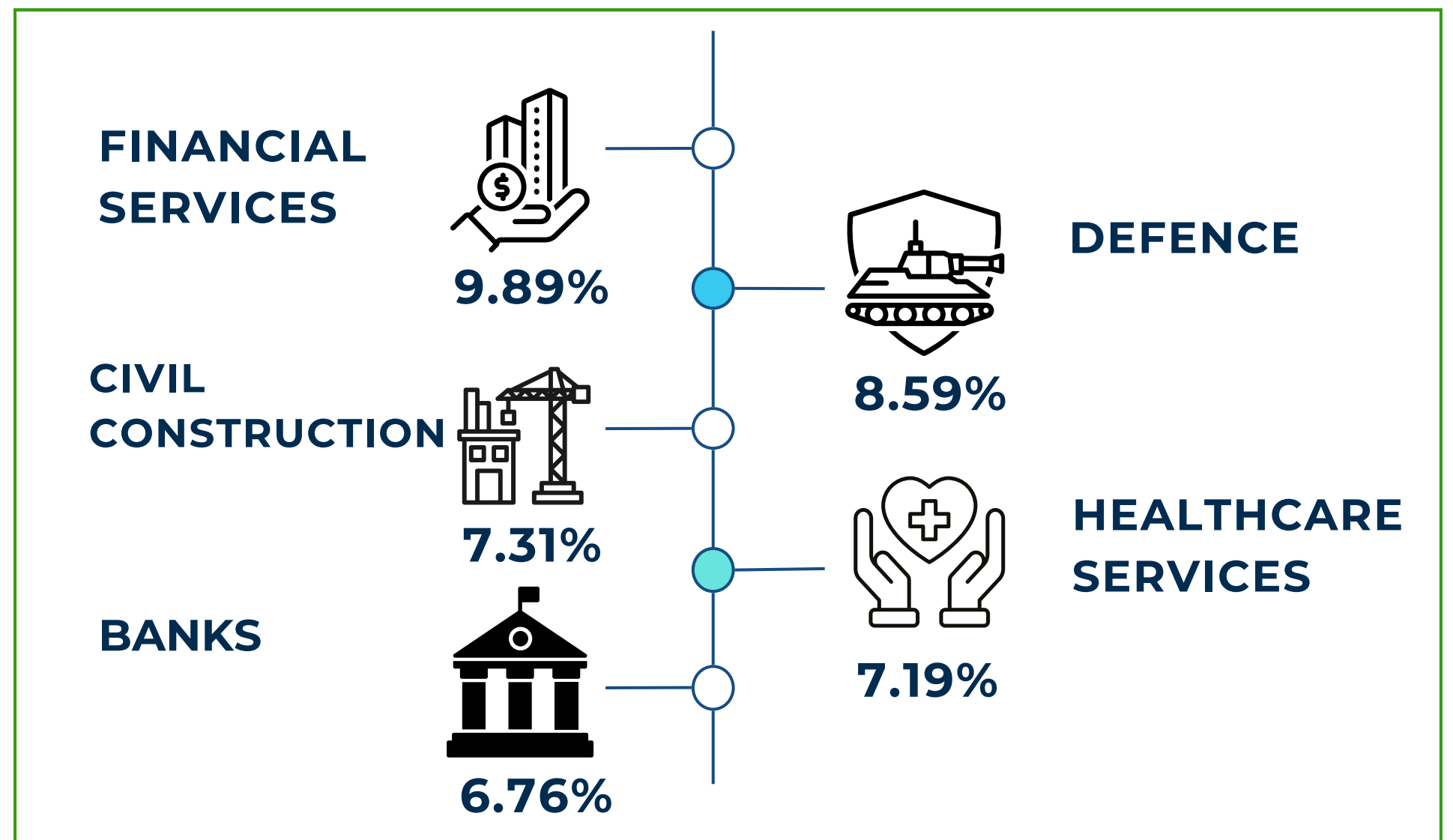
**INCEPTION DATE** : JULY 2021

**AUM SIZE** : 155.9 Cr

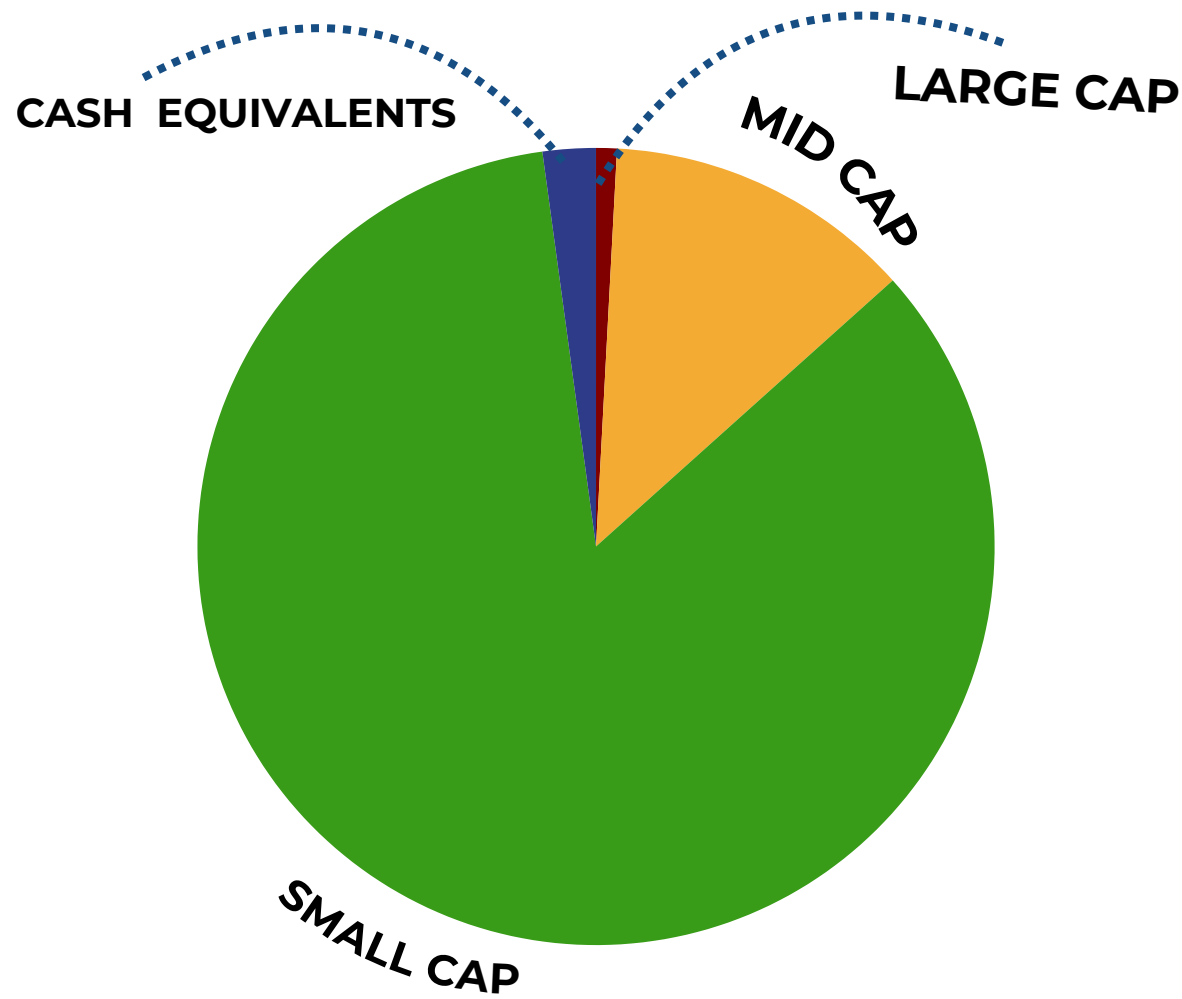
**MINIMUM INVESTMENT** : RS. 50 LAKHS

**BENCHMARK** : BSE 500 TRI

#### SECTOR - TOP 5 HOLDINGS



#### MARKET CAPITALIZATION



#### PORTFOLIO STATISTICS

RATIO	BSE 500 TRI	PORTFOLIO
BETA	1.00	1.40
SD	13.62%	25.15%
SHARPE RATIO	0.5	0.82
TREYNOR RATIO	0.07	0.15

\*AS ON 31<sup>ST</sup> MARCH 2026



#### ASSET ALLOCATION

**EQUITY** : 84.38%

**INVESTIBLE AMOUNT** : 2.13%

**OTHER** : 13.49%

#### DIRECT ON-BOARDING FOR PMS SERVICES

CLIENT HAS AN OPTION OF DIRECT ON-BOARDING WITH THE PORTFOLIO MANAGER WITHOUT INTERMEDIATION OF PERSONS ENGAGED IN DISTRIBUTION SERVICES AND NO CHARGES EXCEPT STATUTORY CHARGES SHALL BE LEVIED AT THE TIME OF SUCH ON-BOARDING. THE CLIENT SHALL INFORM THE PORTFOLIO MANAGER IF HE WISHES TO AVAIL THE OPTION OF DIRECT ON-BOARDING.

A SEBI-Registered Portfolio Management Service

Registration Number INP000006527

0712-6604225/250

+91 8329046596

pms@badjategroup.com



www.badjategroup.com